



BULBS (linear)

TOTALTUBE G3 T8: UL Type A + B LED T8 Tube



RemPhos Part # (Please use full part # code when ordering)	Available	In Production	Power (W)	Lumens (LM)	CCT (K)	DLC S=Standard P=Premium	Energy Star
RPT-B-TOTALTUBE-T8-G3-2FT-830-A	374		10	1350	3000	S	
RPT-B-TOTALTUBE-T8-G3-2FT-835-A	206		10	1350	3500	S	
RPT-B-TOTALTUBE-T8-G3-2FT-840-A	7,903		10	1350	4000	S	
RPT-B-TOTALTUBE-T8-G3-2FT-850-A	24		10	1350	5000	S	
RPT-B-TOTALTUBE-T8-G3-3FT-830-A	537		10	1350	3000		
RPT-B-TOTALTUBE-T8-G3-3FT-835-A	587		10	1350	3500		
RPT-B-TOTALTUBE-T8-G3-3FT-840-A	1,488		10	1350	4000		
RPT-B-TOTALTUBE-T8-G3-3FT-850-A	407		10	1350	5000		
RPT-B-TOTALTUBE-T8-G3-4FT-830-A	301		12	1620	3000	S	
RPT-B-TOTALTUBE-T8-G3-4FT-835-A	8,791		12	1620	3500	S	
RPT-B-TOTALTUBE-T8-G3-4FT-840-A	7,349		12	1620	4000	S	
RPT-B-TOTALTUBE-T8-G3-4FT-850-A	2,625		12	1620	5000	S	
RPT-B-TOTALTUBE-T8-G3-4FTHO-830-A	10		15	2025	3000	S	
RPT-B-TOTALTUBE-T8-G3-4FTHO-835-A	568		15	2025	3500	S	
RPT-B-TOTALTUBE-T8-G3-4FTHO-840-A	*		15	2025	4000	S	
RPT-B-TOTALTUBE-T8-G3-4FTHO-850-A	949		15	2025	5000	S	
RPT-B-TOTALTUBE-T8-G3-2FTU1-830-A	19		15	1950	3000	S	
RPT-B-TOTALTUBE-T8-G3-2FTU1-835-A	607		15	1950	3500	S	
RPT-B-TOTALTUBE-T8-G3-2FTU1-840-A	195		15	1950	4000	S	
RPT-B-TOTALTUBE-T8-G3-2FTU6-830-A	62		15	1950	3000	S	
RPT-B-TOTALTUBE-T8-G3-2FTU6-835-A	497		15	1950	3500	S	
RPT-B-TOTALTUBE-T8-G3-2FTU6-840-A	2,974		15	1950	4000	S	

BCTUBE G3: UL Type A LED T8 Tube



BCTUBE T8 G3 have a temporary pause in production, please order TOTALTUBE T8 G3(for Type A) or EXTDRIVE T8 (for Type C install)

RemPhos Part # (Please use full part # code when ordering)	Available	In Production	Power (W)	Lumens (LM)	CCT (K)	DLC S=Standard P=Premium	Energy Star
---	-----------	---------------	-----------	-------------	---------	-----------------------------	-------------

BCTUBE T5 G1: UL Type A LED T5 Tube



RemPhos Part # (Please use full part # code when ordering)	Available	In Production	Power (W)	Lumens (LM)	CCT (K)	DLC S=Standard P=Premium	Energy Star
RPT-B-BCTUBE-T5-G1-2FT-830-A	23		11	1500	3000	S	
RPT-B-BCTUBE-T5-G1-2FT-835-A	*		11	1500	3500	S	
RPT-B-BCTUBE-T5-G1-2FT-840-A	*		11	1500	4000	S	
RPT-B-BCTUBE-T5-G1-2FT-850-A	448		11	1500	5000	S	
RPT-B-BCTUBE-T5-G1-3FT-830-A	772		14	2000	3000		
RPT-B-BCTUBE-T5-G1-3FT-835-A	201		14	2000	3500		
RPT-B-BCTUBE-T5-G1-3FT-840-A	126		14	2000	4000		
RPT-B-BCTUBE-T5-G1-3FT-850-A	567		14	2000	5000		
RPT-B-BCTUBE-T5-G1-4FT-830-A	1,612		24	3100	3000	S	
RPT-B-BCTUBE-T5-G1-4FT-835-A	378		24	3100	3500	S	
RPT-B-BCTUBE-T5-G1-4FT-840-A	561		24	3100	4000	S	
RPT-B-BCTUBE-T5-G1-4FT-850-A	6,146		24	3100	5000	S	

EXTDRIVE T5 & T8: UL Type C LED T8 Tube + External Driver



External driver LED tube previously were listed as kits. Now they are only sold as separate components.

Please ensure that maximum ratings for the LED tubes are respected as follows:

MAX WATTAGES PER TUBE:

2FT: 15W

3FT: 15W

RemPhos Part # (Please use full part # code when ordering)	Available	In Production	Power (W)	Lumens (LM)	CCT (K)	DLC S=Standard P=Premium	Energy Star
T8 LED Tubes							
RPT-EXTDRIVE-T8-2FT-835	*		DRIVER DEPENDENT		3000		
RPT-EXTDRIVE-T8-2FT-840	*		DRIVER DEPENDENT		4000		
RPT-EXTDRIVE-T8-2FT-850	*		DRIVER DEPENDENT		5000		
RPT-EXTDRIVE-T8-3FT-835	*		DRIVER DEPENDENT		3000		
RPT-EXTDRIVE-T8-3FT-840	*		DRIVER DEPENDENT		4000		
RPT-EXTDRIVE-T8-3FT-850	*		DRIVER DEPENDENT		5000		
RPT-EXTDRIVE-T8-4FT-835	*		DRIVER DEPENDENT		3000		
RPT-EXTDRIVE-T8-4FT-840	*		DRIVER DEPENDENT		4000		
RPT-EXTDRIVE-T8-4FT-850	*		DRIVER DEPENDENT		5000		
T5 LED Tubes							
RPT-EXTDRIVE-T5-2FT-835	*		DRIVER DEPENDENT		3000		
RPT-EXTDRIVE-T5-2FT-840	*		DRIVER DEPENDENT		4000		
RPT-EXTDRIVE-T5-2FT-850	*		DRIVER DEPENDENT		5000		
RPT-EXTDRIVE-T5-3FT-835	*		DRIVER DEPENDENT		3000		
RPT-EXTDRIVE-T5-3FT-840	497		DRIVER DEPENDENT		4000		
RPT-EXTDRIVE-T5-3FT-850	*		DRIVER DEPENDENT		5000		
RPT-EXTDRIVE-T5-4FT-835	*		DRIVER DEPENDENT		3000		
RPT-EXTDRIVE-T5-4FT-840	*		DRIVER DEPENDENT		4000		
RPT-EXTDRIVE-T5-4FT-850	444		DRIVER DEPENDENT		5000		
LED Drivers							
RPT-TDJ-10W-10VDIM	9,485		10				
RPT-TDJ-15W-10VDIM	736		15				
RPT-TDJ-20W-10VDIM	*		20				
RPT-TDJ-30W-10VDIM	*		30				
RPT-TDJ-36W-10VDIM	629		36				
RPT-TDJ-40W-10VDIM	2,369	2,369	40				
RPT-TDJ-60W-10VDIM	491		60				
RPT-TDJ-80W-10VDIM	*		80				

INTDRIVE T5 G3: UL Type B LED T5 Tube



RemPhos Part # (Please use full part # code when ordering)	Available	In Production	Power (W)	Lumens (LM)	CCT (K)	DLC S=Standard P=Premium	Energy Star
RPT-B-INTDRIVE-T5-G3-2FT-835-A	1,383		9	1350	3500	S	
RPT-B-INTDRIVE-T5-G3-2FT-840-A	1,056		9	1350	4000	S	
RPT-B-INTDRIVE-T5-G3-2FT-850-A	68		9	1350	5000	S	
RPT-B-INTDRIVE-T5-G3-3FT-835-A	20		10	1500	3500		
RPT-B-INTDRIVE-T5-G3-3FT-840-A	9		10	1500	4000		
RPT-B-INTDRIVE-T5-G3-3FT-850-A	*		10	1500	5000		
RPT-B-INTDRIVE-T5-G3-4FT-835-A	187		12	1800	3500	S	
RPT-B-INTDRIVE-T5-G3-4FT-840-A	*		12	1800	4000	S	
RPT-B-INTDRIVE-T5-G3-4FT-850-A	516		12	1800	5000	S	
RPT-B-INTDRIVE-T5-G3-4FTHO-835-A	1,597		24	3600	3500	S	
RPT-B-INTDRIVE-T5-G3-4FTHO-840-A	*		24	3600	4000	S	
RPT-B-INTDRIVE-T5-G3-4FTHO-850-A	2,018		24	3600	5000	S	
RPT-B-INTDRIVE-T5-G3-5FT-835-A	87		24	3600	3500		
RPT-B-INTDRIVE-T5-G3-5FT-840-A	20		24	3600	4000		
RPT-B-INTDRIVE-T5-G3-5FT-850-A	*		24	3600	5000		

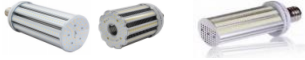
LEDBIAX: UL Type B FL to LED PLL Lamp



RemPhos Part # (Please use full part # code when ordering)	Available	In Production	Power (W)	Lumens (LM)	CCT (K)	DLC S=Standard P=Premium	Energy Star
RPT-LEDBIAX-16IN-3000K	449		15	1500	3000	LDL	
RPT-LEDBIAX-16IN-4000K	448		15	1500	4000	LDL	
RPT-LEDBIAX-22IN-3000K	*		20	2000	3000	LDL	
RPT-LEDBIAX-22IN-4000K	238		20	2000	4000	LDL	

BULBS (screw-base)

LEDSS G2: HID to LED Retrofit Lamp



RemPhos Part # (Please use full part # code when ordering)	Available	In Production	Power (W)	Lumens (LM)	CCT (K)	DLC S=Standard P=Premium	Energy Star
RPT-LEDSSG2-2000LM-4000K-E26	*		15	2000	4000		
RPT-LEDSSG2-2000LM-4000K-E39	*		15	2000	4000		
RPT-LEDSSG2-2500LM-4000K-E26	*		19	2500	4000		
RPT-LEDSSG2-2500LM-4000K-E39	7		19	2500	4000		
RPT-LEDSSH-3000LM-4000K-E26	135		20	3000	4000		
RPT-LEDSSH-3000LM-4000K-E39	72		20	3000	4000	S	
RPT-LEDSSH-6000LM-4000K-E26	48		40	6000	4000		
RPT-LEDSSH-6000LM-4000K-E39	48		40	6000	4000	S	
RPT-LEDSSG2-4000LM-4000K-E26	*		30	4000	4000		
RPT-LEDSSG2-4000LM-4000K-E39	*		30	4000	4000	S	
RPT-LEDSSG2-5600LM-4000K-E26	*		50	5600	4000		
RPT-LEDSSG2-5600LM-4000K-E39	*		50	5600	4000	S	
RPT-LEDSSG2-12000LM-4000K-E39	77		80	12000	4000		
RPT-LEDSSG2-15000LM-4000K-E39	28		100	15000	4000		
RPT-LEDSSG2-19000LM-4000K-E39	105		125	19000	4000	S	

RETROFIT KITS (linear)

LEDBARKITJ: FL to LED Linear Retrofit

-  PRO
-  BASE
-  SUPPLY
-  CUSTOM



RemPhos Part # (Please use full part # code when ordering)	Available	In Production	Power (W)	Lumens (LM)	CCT (K)	DLC S=Standard P=Premium	Energy Star
---	-----------	---------------	-----------	-------------	---------	-----------------------------	-------------

BAR INVENTORY

24 inch 3000K bars	504						DRIVER DEPENDENT
24 inch 3500K bars	133						DRIVER DEPENDENT
24 inch 4000K bars	1,349						DRIVER DEPENDENT
24 inch 5000K bars	340						DRIVER DEPENDENT
36 inch 3000K bars	90						DRIVER DEPENDENT
36 inch 3500K bars	456						DRIVER DEPENDENT
36 inch 4000K bars	486						DRIVER DEPENDENT
36 inch 5000K bars	*						DRIVER DEPENDENT
48 inch 3000K bars	1,551						DRIVER DEPENDENT
48 inch 3500K bars	4,411						DRIVER DEPENDENT
48 inch 4000K bars	7,670						DRIVER DEPENDENT
48 inch 5000K bars	*						DRIVER DEPENDENT

DRIVER INVENTORY

RPT-TDJ-10W-10VDIM	9,485		10				
RPT-TDJ-15W-10VDIM	736		15				
RPT-TDJ-20W-10VDIM	*		20				
RPT-TDJ-30W-10VDIM	*		30				
RPT-TDJ-36W-10VDIM	629		36				
RPT-TDJ-40W-10VDIM	2,369	2,369	40				
RPT-TDJ-60W-10VDIM	491		60				
RPT-TDJ-80W-10VDIM	*		80				

RETROFIT KITS (HID + HPS + MH)

LEDSS EXT G2: HID to LED Post-Top Retrofit Kit



RemPhos Part # (Please use full part # code when ordering)	Available	In Production	Power (W)	Lumens (LM)	CCT (K)	DLC S=Standard P=Premium	Energy Star
RPT-LEDSSEXT-18L-740-X-G2	377		15	1950	4000	S	
RPT-LEDSSEXT-30L-740-X-G2	21		22	2860	4000	S	
RPT-LEDSSEXT-44L-740-X-G2	*		40	5400	4000	S	
RPT-LEDSSEXT-44L-740-E39-G2	*		40	5400	4000	S	

(above standard with 100-277V NON-DIMMABLE DRIVER)

ACCESSORIES & CUSTOM OPTIONS

BAA Section 1605 Compliance (-BAA)

-10VDIM

RPT-ACCESSORY-480V TRANSFORMER

RPT-ACCESSORY-EXTERNALSURGE-277V

CUSTOM CCT: -730, -750

LEDBLOCK G3: HID to LED Retrofit Kit

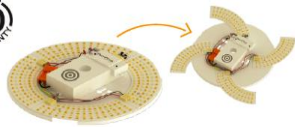


RemPhos Part # (Please use full part # code when ordering)	Available	In Production	Power (W)	Lumens (LM)	CCT (K)	DLC S=Standard P=Premium	Energy Star
RPT-LEDBLOCK-65L-740-G3	*		30	5100	4000	P	
RPT-LEDBLOCK-100L-740-G3	32		52	8850	4000	P	
RPT-LEDBLOCK-150L-740-G3	*		100	15700	4000	P	

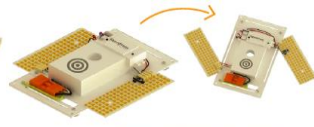
RPT-LEDBLOCK-200L-740-G3	*	110	20000	4000	P
RPT-LEDBLOCK-300L-740-G3	6	150	24000	4000	P
RPT-LEDBLOCK-400L-740-G3	*	277	43000	4000	P
RPT-LEDBLOCK-65L-750-G3	568	30	5100	5000	P
RPT-LEDBLOCK-100L-750-G3	97	52	8850	5000	P
RPT-LEDBLOCK-150L-750-G3	68	100	15700	5000	P
RPT-LEDBLOCK-200L-750-G3	22	110	20000	5000	P
RPT-LEDBLOCK-300L-750-G3	7	150	24000	5000	P
RPT-LEDBLOCK-400L-750-G3	169	277	43000	5000	P

RETROFIT KITS(drum + sconce + vanity)

LEDRCR G2 + LEDSR G2: LED Retrofit Kit | FlexColor | FlexWatt +FlexControl



LEDRCR-G2-9IN (EXPANDABLE LED BOARDS)



LEDSR-G2-4IN (EXPANDABLE LED BOARDS)



LEDSR-G2-14INM (FIXED LED BOARDS)



LEDSR-G2-14INE (FIXED LED BOARDS)



LEDSR-G2-9IN

flexCOLOR

Default is set to **4000K**
Adjust in field or allow 2 weeks leadtime for RemPhos factory adjustment.

- 3000°K NEUTRAL WHITE
- 3500°K NEUTRAL WHITE
- 4000°K NEUTRAL WHITE

flexWATT

Default is set to **(LEDRCR=10W), (LEDSR=6W)**
Adjust in field or allow 2 weeks leadtime for RemPhos factory

- LEDRCR 6W
- LEDSR 6W
- 10W 9W
- 16W 12W
- 22W 15W

flexCONTROL

Optional integral, hidden high/low motion sensor

RemPhos Part # (Please use full part # code when ordering)	Available	In Production	Power (W)	Lumens (LM)	CCT (K)	DLC S=Standard P=Premium	Energy Star
RPT-P-LEDRCR-G2-9IN-XXL-8XX-FWFC	*	604	6-22	780-3124	30/35/40	P (on 2/20/18)	
RPT-P-LEDRCR-G2-9IN-XXL-8XX-FWFC-OCC	1,086		6-22	780-3124	30/35/40	P (on 2/20/18)	
RPT-P-LEDSR-G2-4IN-XXL-8XX-FWFC	2,014		6-15	780-2130	30/35/40	P (on 2/20/18)	
RPT-P-LEDSR-G2-4IN-XXL-8XX-FWFC.OCC	876		6-15	780-2130	30/35/40	P (on 2/20/18)	
RPT-P-LEDSR-G2-9IN-XXL-8XX-FWFC	1,220		6-15	780-2130	30/35/40	P (on 2/20/18)	
RPT-P-LEDSR-G2-9IN-XXL-8XX-FWFC.OCC	1,379		6-15	780-2130	30/35/40	P (on 2/20/18)	
RPT-P-LEDSR-G2-14INE-XXL-8XX-FWFC	2,504		6-15	780-2130	30/35/40	P (on 2/20/18)	
RPT-P-LEDSR-G2-14INE-XXL-8XX-FWFC.OCC	2,201		6-15	780-2130	30/35/40	P (on 2/20/18)	
RPT-P-LEDSR-G2-14INM-XXL-8XX-FWFC	1,288		6-15	780-2130	30/35/40	P (on 2/20/18)	
RPT-P-LEDSR-G2-14INM-XXL-8XX-FWFC.OCC	2,026		6-15	780-2130	30/35/40	P (on 2/20/18)	

LEDRCR G1: LED Retrofit Kit for Circular Surface Mount Fixture



G1 is being phased out and replaced by G2.

RemPhos Part # (Please use full part # code when ordering)	Available	In Production	Power (W)	Lumens (LM)	CCT (K)	DLC S=Standard P=Premium	Energy Star
RPT-LEDRCR-900LM-3000K	294		7	900	3000		Yes
RPT-LEDRCR-900LM-4000K	*		7	900	4000		Yes
RPT-LEDRCR-2200LM-3000K	*		18	2200	3000		Yes
RPT-LEDRCR-3000LM-3000K	725		27	3000	3000		Yes
RPT-LEDRCR-900LM-3000K-OCC	974		7	900	3000		Yes
RPT-LEDRCR-900LM-4000K-OCC	319		7	900	4000		Yes

LEDSR G1: LED Retrofit Kit for Linear Surface Mount Fixture



G1 is being phased out and replaced by G2.

RPT-LEDSR-900LM-2700K-OCC	79		7	900	3000		Yes
RPT-LEDSR-900LM-3000K-OCC	128		7	900	3000		Yes

LEDVR: LED Retrofit Kit for Vanity Fixture



RemPhos Part # (Please use full part # code when ordering)	Available	In Production	Power (W)	Lumens (LM)	CCT (K)	DLC S=Standard P=Premium	Energy Star
RPT-LEDVR-12IN-1200LM-3000K	*		10	1200	3000		
RPT-LEDVR-16IN-1200LM-3000K	28		10	1200	3000		
RPT-LEDVR-20IN-1600LM-3000K	*		12	1600	3000		
RPT-LEDVR-20IN-1600LM-3000K-UPLIGHT	*		12	1600	3000		

INDOOR FIXTURES (Flat Panel)

LEDPANEL G3 | FlexColor + FlexWatt + FlexControl



We will have limited in-stock inventory of the LEDPANEL G3 starting 2/15/18 with the first large shipment arriving 3/25/18.

flexCOLOR

Default is set to 4000K
Adjust in field or allow 2 weeks leadtime for RemPhos factory adjustment.

- 3500K NEUTRAL WHITE
- 4000K NEUTRAL WHITE
- 5000K COOL WHITE

flexWATT

Default is set to (2X2=16W), (1X4=16W), (2X4=20W)
Adjust in field or allow 2 weeks leadtime for RemPhos factory adjustment.

2x2	16W	20W	24W	28W
1x4	16W	20W	24W	28W
2x4	20W	24W	28W	40W

flexCONTROL

Optional completely hidden high/low motion sensor (OCC).
Optional remote control to adjust

Optional surface mount kit (SMK)

Optional 120min battery backup (EMG)

RemPhos Part # (Please use full part # code when ordering)	Available	In Production	Power (W)	Lumens (LM)	CCT (K)	DLC S=Standard P=Premium	Energy Star
RPT-P-LEDPANEL-G3-2X2-XXL-8XX-FWFC	6,224	2,000	16-28	2000-3640	35/40/50	P	
RPT-P-LEDPANEL-G3-2X2-XXL-8XX-FWFC-OCC	1,393	1,002	16-28	2000-3640	35/40/50	P	
RPT-P-LEDPANEL-G3-1X4-XXL-8XX-FWFC	664		16-28	1968-3556	35/40/50	P	
RPT-P-LEDPANEL-G3-1X4-XXL-8XX-FWFC-OCC	1,183		16-28	1968-3556	35/40/50	P	
RPT-P-LEDPANEL-G3-2X4-XXL-8XX-FWFC	4,064	1,024	20-40	2640-5280	35/40/50	P	
RPT-P-LEDPANEL-G3-2X4-XXL-8XX-FWFC-OCC	1,800		20-40	2640-5280	35/40/50	P	

INDOOR FIXTURES (Sconce)

LED DESIGNER SCONCE



flexCOLOR

- 3000K NEUTRAL WHITE
- 3500K NEUTRAL WHITE
- 4000K NEUTRAL WHITE

flexWATT

LED CR	6W	10W	16W	22W
LED SR	6W	9W	12W	15W

flexCONTROL

Designer sconce with LEDSR G2 light engine, offering additional wattage and color choices will be available 3/1/18.

RemPhos Part # (Please use full part # code when ordering)	Available	In Production	Power (W)	Lumens (LM)	CCT (K)	DLC S=Standard P=Premium	Energy Star
RPT-P-LEDSR-G2-4IN-XXL-8XX-FWFC	2,014		6-15	780-2130	30/35/40	P (on 2/20/18)	
RPT-P-LEDSR-G2-4IN-XXL-8XX-FWFC.OCC	876		6-15	780-2130	30/35/40	P (on 2/20/18)	
RPT-DESIGNERSCONCE-HOUSING	1,029	#REF!					

Above represents availability of LEDSRs, below represents availability of housings

INDOOR FIXTURES (Drum)

LED UTILITY DRUM



flex:COLOR

- 3000°K NEUTRAL WHITE
- 3500°K NEUTRAL WHITE
- 4000°K NEUTRAL WHITE

flex:WATT

- LED CR 6W 10W 16W 22W
- LED SR 6W 9W 12W 15W

flex:CONTROL

Utility drum with LEDCR G2 light engine, offering additional wattage and color choices will be available 3/1/18.

RemPhos Part # (Please use full part # code when ordering)	Available	In Production	Power (W)	Lumens (LM)	CCT (K)	DLC S=Standard P=Premium	Energy Star
RPT-P-LEDCR-G2-9IN-XXL-8XX-FWFC	*	604	6-22	780-3124	30/35/40	P (on 2/20/18)	
RPT-P-LEDCR-G2-9IN-XXL-8XX-FWFC-OCC	1,086		6-22	780-3124	30/35/40	P (on 2/20/18)	
Above represents availability of LEDCRs, below represents availability of housings							
RPT-DRUM-11IN-PAN	*						
RPT-DRUM-11IN-LENS	*						
RPT-DRUM-14IN-PAN	*						
RPT-DRUM-14IN-LENS	*						

LED DESIGNER DRUM



flex:COLOR

- 3000°K NEUTRAL WHITE
- 3500°K NEUTRAL WHITE
- 4000°K NEUTRAL WHITE

flex:WATT

- LED CR 6W 10W 16W 22W
- LED SR 6W 9W 12W 15W

flex:CONTROL

Designer drum with LEDCR G2 light engine, offering additional wattage and color choices will be available 3/1/18.

RemPhos Part # (Please use full part # code when ordering)	Available	In Production	Power (W)	Lumens (LM)	CCT (K)	DLC S=Standard P=Premium	Energy Star
RPT-P-LEDCR-G2-9IN-XXL-8XX-FWFC	*	604	6-22	780-3124	30/35/40	P (on 2/20/18)	
RPT-P-LEDCR-G2-9IN-XXL-8XX-FWFC-OCC	1,086		6-22	780-3124	30/35/40	P (on 2/20/18)	
Above represents availability of LEDCRs, below represents availability of housings							
RPT-14IN-DESIGNER-DRUM-HOUSING	66						
RPT-18IN-DESIGNER-DRUM-HOUSING	648						

LED OUTDOOR DRUM



flex:COLOR

- 3000°K NEUTRAL WHITE
- 3500°K NEUTRAL WHITE
- 4000°K NEUTRAL WHITE

flex:WATT

- LED CR 6W 10W 16W 22W
- LED SR 6W 9W 12W 15W

flex:CONTROL

Outdoor drum with LEDCR G2 light engine, offering additional wattage and color choices will be available 3/1/18.

RemPhos Part # (Please use full part # code when ordering)	Available	In Production	Power (W)	Lumens (LM)	CCT (K)	DLC S=Standard P=Premium	Energy Star
RPT-P-LEDCR-G2-9IN-XXL-8XX-FWFC	*	604	6-22	780-3124	30/35/40	P (on 2/20/18)	
RPT-P-LEDCR-G2-9IN-XXL-8XX-FWFC-OCC	1,086		6-22	780-3124	30/35/40	P (on 2/20/18)	
Above represents availability of LEDCRs, below represents availability of housings							
RPT-12IN-OUTDOORDRUM-HOUSING	*	#REF!					

LED TOUGH DRUM



flex:COLOR

- 3000°K NEUTRAL WHITE
- 3500°K NEUTRAL WHITE
- 4000°K NEUTRAL WHITE

flex:WATT

- LED CR 6W 10W 16W 22W
- LED SR 6W 9W 12W 15W

flex:CONTROL

Outdoor drum with LEDCR G2 light engine, offering additional wattage and color choices will be available 3/1/18.

RemPhos Part # (Please use full part # code when ordering)	Available	In Production	Power (W)	Lumens (LM)	CCT (K)	DLC S=Standard P=Premium	Energy Star
RPT-P-LEDCR-G2-9IN-XXL-8XX-FWFC	*	604	6-22	780-3124	30/35/40	P (on 2/20/18)	
RPT-P-LEDCR-G2-9IN-XXL-8XX-FWFC-OCC	1,086		6-22	780-3124	30/35/40	P (on 2/20/18)	
Above represents availability of LEDCRs, below represents availability of housings							
RPT-13IN-TOUGHDRUM-HOUSING	50						

LED ECONOMY DRUM



RemPhos Part # (Please use full part # code when ordering)	Available	In Production	Power (W)	Lumens (LM)	CCT (K)	DLC S=Standard P=Premium	Energy Star
RPT-ECONOMYDRUM-9IN-900LM-3000K	223		7	720	3000		

ACCESSORIES & CUSTOM OPTIONS

BAA Section 1605 Compliance (-BAA)

INDOOR FIXTURES (Linear)

LIVC G2 Stairwell & Corridor & Midbay Fixture | FlexColor + FlexWatt + FlexControl



flexCOLOR

Default is set to 4000K
Adjust in field or allow 2 weeks leadtime for RemPhos factory adjustment.

- 3000°K WARM WHITE
- 3500°K NEUTRAL WHITE
- 4000°K NEUTRAL WHITE

flexWATT

Default is set to (2FT=15W), (3FT=15W), (4FT=15W)
Adjust in field or allow 2 weeks leadtime for RemPhos factory adjustment.

- 2FT 10W 15W
- 3FT 10W 15W
- 4FT 10W 15W
- 20W 30W
- 20W 30W 40W

flexCONTROL

Optional completely hidden high/low

Optional 120min battery

RemPhos Part # (Please use full part # code when ordering)	Available	In Production	Power (W)	Lumens (LM)	CCT (K)	DLC S=Standard P=Premium	Energy Star
RPT-P-LIVC-G2-2FT-XXL-8XX-FWFC-R-S1	*	683	10-30	2000-3640	35/40/50	P	
RPT-P-LIVC-G2-2FT-XXL-8XX-FWFC-OCC-R-S1	3,888		10-30	2000-3640	35/40/50	P	
RPT-P-LIVC-G2-3FT-XXL-8XX-FWFC-R-S1	415		15-30	1968-3556	35/40/50	P	
RPT-P-LIVC-G2-3FT-XXL-8XX-FWFC-OCC-R-S1	224		15-30	1968-3556	35/40/50	P	
RPT-P-LIVC-G2-4FT-XXL-8XX-FWFC-R-S1	784		10-40	2640-5280	35/40/50	P	
RPT-P-LIVC-G2-4FT-XXL-8XX-FWFC-OCC-R-S1	3,127	2,520	10-40	2640-5280	35/40/50	P	

LED LIVC LINEAR FIXTURE



G1 is being phased out and replaced by G2. G1 can still be supplied if required.

RemPhos Part # (Please use full part # code when ordering)	Available	In Production	Power (W)	Lumens (LM)	CCT (K)	DLC S=Standard P=Premium	Energy Star
RPT-LIVC-24IN-1800LM-4000K	*		15	1800	4000	S	
RPT-LIVC-48IN-1800LM-4000K	123		15	1800	4000	S	
RPT-LIVC-48IN-2800LM-4000K	63		25	2800	4000	S	
RPT-LIVC-24IN-1800LM-4000K-OCC	23		15	1800	4000	S	
RPT-LIVC-48IN-2800LM-4000K-OCC	*		25	2800	4000	S	

LED LIVH LINEAR STRIP FIXTURE



RemPhos Part # (Please use full part # code when ordering)	Available	In Production	Power (W)	Lumens (LM)	CCT (K)	DLC S=Standard P=Premium	Energy Star
RPT-LIVH-48IN-50L-840-G1	9		40	5390	4000	P	
RPT-LIVH-48IN-50L-850-G1	*		40	5400	5000	P	
RPT-LIVH-96IN-80L-840-G1	36		60	8280	4000	P	
RPT-LIVH-96IN-80L-850-G1	6		60	8400	5000	P	

LED LIV MODERN LINEAR FIXTURE



RemPhos Part # (Please use full part # code when ordering)	Available	In Production	Power (W)	Lumens (LM)	CCT (K)	DLC S=Standard P=Premium	Energy Star
RPT-LIVMODERN-24IN-1800LM-3000K	*		24	1785	3000		
RPT-LIVMODERN-24IN-1800LM-4000K	*		24	1850	4000		
RPT-LIVMODERN-36IN-3000LM-3000K	7		37	2910	3000		
RPT-LIVMODERN-36IN-3000LM-4000K	14		37	3000	4000		
RPT-LIVMODERN-48IN-3500LM-3000K	96		48	3420	3000		
RPT-LIVMODERN-48IN-3500LM-4000K	*		48	3520	4000		

FIXTURES (Industrial)

LED CIRCULAR HIGH BAY LUMINAIRE



RemPhos Part # (Please use full part # code when ordering)	Available	In Production	Power (W)	Lumens (LM)	CCT (K)	DLC S=Standard P=Premium	Energy Star
RPT-LEDHBC-130L-750-G1	*		100	13000	5000	P	
RPT-LEDHBC-200L-750-G1	*		150	19500	5000	P	
RPT-LEDHBC-260L-750-G1	*		200	26000	5000	P	

LED LINEAR HIGH BAY LUMINAIRE



New lower pricing for 2018!

~2 week delivery on 1 to

RemPhos Part # (Please use full part # code when ordering)	Available	In Production	Power (W)	Lumens (LM)	CCT (K)	DLC S=Standard P=Premium	Energy Star
RPT-LEDHB-24IN-140L-850-10VDIM-FL-G1	396		110	14410	5000	P	
RPT-LEDHB-24IN-200L-850-10VDIM-FL-G1	88		162	21222	5000	P	
RPT-LEDHB-48IN-170L-850-10VDIM-FL-G1	14		130	17685	5000	P	
RPT-LEDHB-48IN-230L-850-10VDIM-FL-G1	576		178	23318	5000	P	
RPT-LEDHB-48IN-300L-850-10VDIM-FL-G1	*		223	29213	5000	P	
RPT-LEDHB-48IN-400L-850-10VDIM-FL-G1	*		321	41920	5000	P	
Add as a separate line item on PO:							
RPT-LEDHB-24N-140L Wire Guard	*						
RPT-LEDHB-24IN-200L Wire Guard	*						
RPT-LEDHB-48IN-170L-230L-300L Wire Guard	*						
RPT-LEDHB-48IN-400L Wire Guard	*						
RPT-LEDHB-PMK-24IN-48IN	*						
RPT-LEDHB-SMK-24IN-140L-48IN-170L-230L-300L	*						
RPT-LEDHB-SMK-24IN-200L-48IN-400L	*						

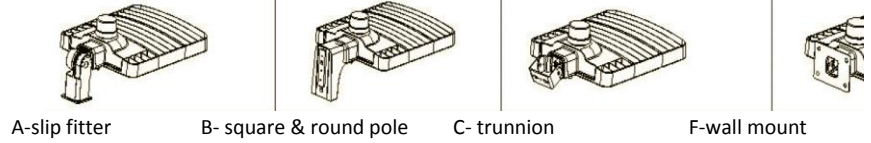
FIXTURES (Exterior)

LEDAL G2: Area Light and Parking Lot Luminaire



We will have limited in-stock inventory of the LEDAL G2 starting 2/15/18 with the first large shipment arriving 3/25/18.

All LEDAL come standard with 7-pin photocell receptacle, water-tight shorting cap, 15kV surge & 10V dimming driver.



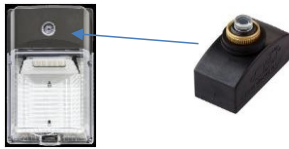
RemPhos Part # (Please use full part # code when ordering)	Available	In Production	Power (W)	Lumens (LM)	CCT (K)	DLC S=Standard P=Premium	Energy Star
---	-----------	---------------	-----------	-------------	---------	-----------------------------	-------------

Dark Brown							
RPT-P-LEDAL-G2-75L-840-STD-T3-DB	*		50	7500	4000	P	
RPT-P-LEDAL-G2-120L-840-STD-T3-DB	14		80	12000	4000	P	
RPT-P-LEDAL-G2-140L-840-STD-T3-DB	14		100	14000	4000	P	
RPT-P-LEDAL-G2-200L-840-STD-T3-DB	*		150	20000	4000	P	
RPT-P-LEDAL-G2-270L-840-STD-T3-DB	*		200	27000	4000	P	
RPT-P-LEDAL-G2-330L-840-STD-T3-DB	211		240	33000	4000	P	
RPT-P-LEDAL-G2-400L-840-STD-T3-DB	337		300	40000	4000	P	

Light Gray							
RPT-P-LEDAL-G2-75L-840-STD-T3-LG	*		50	7500	4000	P	
RPT-P-LEDAL-G2-120L-840-STD-T3-LG	*		80	12000	4000	P	
RPT-P-LEDAL-G2-140L-840-STD-T3-LG	21		100	14000	4000	P	
RPT-P-LEDAL-G2-200L-840-STD-T3-LG	*		150	20000	4000	P	
RPT-P-LEDAL-G2-270L-840-STD-T3-LG	*		200	27000	4000	P	
RPT-P-LEDAL-G2-330L-840-STD-T3-LG	50		240	33000	4000	P	
RPT-P-LEDAL-G2-400L-840-STD-T3-LG	30		300	40000	4000	P	

Bracket Inventory							
A- SLIPFITTER - DARK BROWN	432						
B - SQUARE & ROUND POLE - DARK BROWN	208						
C - TRUNNION - DARK BROWN	336						
F - WALL MOUNT - DARK BROWN	446						
A- SLIPFITTER - LIGHT GRAY	29						
B - SQUARE & ROUND POLE - LIGHT GRAY	26						
C - TRUNNION - LIGHT GRAY	50						
F - WALL MOUNT - LIGHT GRAY	40						

LEDCWP: Compact Wall Pack Luminaire



Photocell included standard. Can be in-field wired to bypass photocell.

We will have limited in-stock inventory of the LEDCWP starting 2/15/18 with the first large shipment arriving 3/25/18.

RemPhos Part # (Please use full part # code when ordering)	Available	In Production	Power (W)	Lumens (LM)	CCT (K)	DLC S=Standard P=Premium	Energy Star
RPT-P-LEDCWP-G1-13L-840	19		12	1300	4000	P	
RPT-P-LEDCWP-G1-20L-840	23		18	1980	4000	P	
RPT-P-LEDCWP-G1-30L-840	174		26	2860	4000	P	

FIXTURES (Garage & Canopy)

LED LINEAR VAPOR TIGHT



RemPhos Part # (Please use full part # code when ordering)	Available	In Production	Power (W)	Lumens (LM)	CCT (K)	DLC S=Standard P=Premium	Energy Star
RPT-LEDVT-48IN-4000LM-4000K	*		40	4000	4000	S	
RPT-LEDVT-48IN-4000LM-5000K	*		40	4000	5000	S	
RPT-LEDVT-48IN-4000LM-4000K-OCC	*		40	4000	4000	S	

FIXTURES (Garage & Canopy)

LED LOW PROFILE CANOPY



RemPhos Part # (Please use full part # code when ordering)	Available	In Production	Power (W)	Lumens (LM)	CCT (K)	DLC S=Standard P=Premium	Energy Star
RPT-LEDCF-3100LM-4000K-10VDIM	*		30	3100	4000	S	
RPT-LEDCF-3100LM-4000K-OCC	44		30	3100	4000	S	
RPT-LEDCF-3100LM-5000K-10VDIM	9		30	3100	5000	S	
RPT-LEDCF-4500LM-4000K-10VDIM	*		40	4500	4000	S	
RPT-LEDCF-4500LM-4000K-OCC	157		40	4500	4000	S	
RPT-LEDCF-4500LM-5000K-10VDIM	46		40	4500	5000	S	
RPT-LEDCF-5800LM-4000K-10VDIM	*		52	5800	4000	S	
RPT-LEDCF-5800LM-4000K-OCC-A	*		52	5800	4000	S	
RPT-LEDCF-5800LM-4000K-OCC	299		52	5800	4000	S	
RPT-LEDCF-5800LM-5000K-10VDIM	40		52	5800	5000	S	
RPT-LEDCF-5800LM-5000K-OCC	82		52	5800	5000	S	

FIXTURES (Wall Mount)

LED OUTDOOR WALLPACK G2



RemPhos Part # (Please use full part # code when ordering)	Available	In Production	Power (W)	Lumens (LM)	CCT (K)	DLC S=Standard P=Premium	Energy Star
RPT-LEDWMB-20L-750-G2	26		20	2000	5000	S	
RPT-LEDWMB-30L-750-G2	*		30	3000	5000	S	

FIXTURES (Special Applications)

LED SPRAY BOOTH FIXTURE



RemPhos Part # (Please use full part # code when ordering)	Available	In Production	Power (W)	Lumens (LM)	CCT (K)	DLC S=Standard P=Premium	Energy Star
RPT-LEDSB-22000LM-5000K	*	#REF!	200	22000	500	P	

*** PHASED OUT - NO LONGER AVAILABLE WHEN STOCK IS DEPLETED ***

TOTALtUBE G2 T8: UL Type A + B LED T8 Tube



RemPhos Part # (Please use full part # code when ordering)	Available	Power (W)	Lumens (LM)	CCT (K)	DLC S=Standard P=Premium	Energy Star
RPT-TOTALTUBEG2-T8-24IN-3000K	324	9.6	1150	3000		S
RPT-TOTALTUBEG2-T8-36IN-3500K	325	13	1700	4000		
RPT-TOTALTUBEG2-T8-36IN-4000K	30	13	1700	4000		
RPT-TOTALTUBEG2-T8-48IN-3000K	200	13	1550	3000		S
RPT-TOTALTUBEG2-T8-48IN-5000K	225	13	1700	5000		S
RPT-TOTALTUBEHOG2-T8-48IN-3000K	167	17	2050	3000		S
RPT-TOTALTUBEHOG2-T8-48IN-3500K	149	17	2050	3500		S
RPT-TOTALTUBEHOG2-T8-48IN-4000K	767	17	2250	4000		S
RPT-TOTALTUBEHOG2-T8-48IN-5000K	1,301	17	2250	5000		S

TOTALtUBE G1 T8: UL Type A + B LED T8 Tube



RemPhos Part # (Please use full part # code when ordering)	Available	Power (W)	Lumens (LM)	CCT (K)	DLC S=Standard P=Premium	Energy Star
RPT-TOTALTUBE-T8-24IN-3000K	64	12	1300	3000		S
RPT-TOTALTUBE-T8-24IN-4000K	223	12	1300	4000		S
RPT-TOTALTUBE-T8-24IN-5000K	468	12	1300	5000		S
RPT-TOTALTUBE-T8-48IN-3000K	242	14	1600	3000		S
RPT-TOTALTUBE-T8-48IN-4000K	19	14	1600	4000		S
RPT-TOTALTUBE-T8-48IN-5000K	*	14	1600	5000		S

BCTUBE T8 G1: UL Type A LED T8 Tube



RemPhos Part # (Please use full part # code when ordering)	Available	Power (W)	Lumens (LM)	CCT (K)	DLC S=Standard P=Premium	Energy Star
RPT-BCTUBE-T8-48IN-3000K	350	14	1860	3000		S

INTDRIVE T8: UL Type B LED T8 Tube



RemPhos Part # (Please use full part # code when ordering)	Available	Power (W)	Lumens (LM)	CCT (K)	DLC S=Standard P=Premium	Energy Star
RPT-INTDRIVE-T8-18IN-4000K	228	7	910	4000		
RPT-INTDRIVE-T8-24IN-4000K	27	8	1040	4000		S
RPT-INTDRIVE-T8-36IN-4000K	97	7	910	4000		
RPT-INTDRIVE-T8-48IN-4000K	167	17	2210	4000		S
RPT-INTDRIVE-T8-48IN-5000K	25	17	2210	5000		S
RPT-INTDRIVE-T8-96IN-4000K	50	36	4680	4000		

SNT8 T8: UL Type B LED T8 Tube



RemPhos Part # (Please use full part # code when ordering)	Available	Power (W)	Lumens (LM)	CCT (K)	DLC S=Standard P=Premium	Energy Star
RPT-SNT8-04LG-3000K	3,106	8	1040	3000		
RPT-SNT8-12LG-2700K-HIGHCRI	768	18	2300	2700		

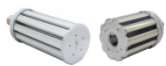
*** PHASED OUT - NO LONGER AVAILABLE WHEN STOCK IS DEPLETED ***

INTDRIVE T5: UL Type B LED T5 Tube



RemPhos Part # (Please use full part # code when ordering)	Available	Power (W)	Lumens (LM)	CCT (K)	DLC S=Standard P=Premium	Energy Star
RPT-INTDRIVE-T5-22IN-3000K	*	10	1300	3000		
RPT-INTDRIVE-T5-22IN-3500K	143	10	1300	3000		
RPT-INTDRIVE-T5-22IN-4000K	334	10	1300	4000		
RPT-INTDRIVE-T5-33IN-3500K	81	20	2600	4000		
RPT-INTDRIVE-T5-33IN-4000K	546	20	2600	4000		
RPT-INTDRIVE-T5HO-46IN-3500K	212	28	3640	3500		
RPT-INTDRIVE-T5HO-46IN-5000K	111	28	3640	5000		
RPT-INTDRIVE-T5-46IN-3000K	6	13	1690	3000		
RPT-INTDRIVE-T5-46IN-3500K	27	13	1690	3500		
RPT-INTDRIVE-T5-46IN-4000K	84	13	1690	4000		
RPT-INTDRIVE-T5-46IN-5000K	144	13	1690	5000		
RPT-INTDRIVE-T5-58IN-4000K	98	35	4550	4000		
RPT-INTDRIVE-T5-58IN-5000K	37	35	4550	5000		

LEDSS: HID to LED Retrofit Lamp



RemPhos Part # (Please use full part # code when ordering)	Available	Power (W)	Lumens (LM)	CCT (K)	DLC S=Standard P=Premium	Energy Star
RPT-LEDSS-2500LM-4000K-E26	23	20	2500	4000		
RPT-LEDSS-2500LM-4000K-E39	13	20	2500	4000		
RPT-LEDSS-4000LM-4000K-E39	9	36	4000	4000		
RPT-LEDSS-12000LM-4000K-E39	8	100	12000	4000		
RPT-LEDSS-19000LM-4000K-E39	16	100	15000	4000		

LEDSS EXT: HID to LED Post-Top Retrofit Kit



RemPhos Part # (Please use full part # code when ordering)	Available	Power (W)	Lumens (LM)	CCT (K)	DLC S=Standard P=Premium	Energy Star
RPT-LEDSSEXT-1800LM-4000K	71	16	1800	4000		S

LEDBLOCK G2 MODULE: HID to LED Retrofit Kit



RemPhos Part # (Please use full part # code when ordering)	Available	Power (W)	Lumens (LM)	CCT (K)	DLC S=Standard P=Premium	Energy Star
RPT-LEDBLOCKG2-15000LM-5000K-10VDIM	14	120	15000	5000	P	
RPT-LEDBLOCKG2-20000LM-5000K	13	150	20000	5000	P	
RPT-LEDBLOCKG2-20000LM-5000K-10VDIM	19	150	20000	5000	P	

REMPHOS TERMS & CONDITIONS

MINIMUM ORDER IS \$200

MINIMUM ORDER FOR PREPAID FREIGHT (DOMESTIC ONLY)

- New England and Upstate NY – \$1,500
- Outside NE and UNY (CONUS excluding Hawaii and Alaska) – \$3,000
- RemPhos does not cover freight for the following situations: sea, air, premium expedited freight, shipment to islands (i.e. Nantucket, Martha's Vineyard etc.)

RETURNS

- Product may be returned only with prior written approval from REMPHOS's Customer Service Department.
- Product must be in unused condition, in original packaging and must be marked with the Return Goods Authorization (RMA) Number.
- Contact orders@remphos.com for an RMA
- Product returned will be subject to a 25% restocking charge with all freight charges being the buyer's responsibility.
- Custom Designed products and Special Order Items are not returnable without special consideration from REMPHOS.
- Item must be listed in current price schedule

DAMAGE IN SHIPMENT

- All shipments are FOB Origin. Transfer occurs when the carrier picks up the product.
- Damage claims must be filed with the Carrier

SAMPLES

- Place sample orders at orders@remphos.com
- Mark "Samples" clearly on the order
- Invoice will receive 90 days dating intended to give the user enough time to test and return the product if it does not fit their needs

WARRANTY

- Various warranty terms by product. See product cut sheet and link to warranty terms on web site below
- <http://www.remphos.com/images/RemPhosWarranty.pdf>

PAYMENT TERMS

- Net 30 Days

LATE CHARGE

- 1-1/2% (18% per annum) assess at the end of each month the invoice is past due
- Product will not be shipped to past due accounts

PAYMENT BY CREDIT CARD

- Will be assessed a 3% credit card fee

REMPHOS WEEKLY INVENTORY REPORT

- Subscribe on the Home Page of our website www.remphos.com

SPECIAL PRICE QUOTES OR CUSTOM PRODUCT REQUESTS

- Contact your local sales agent or sales@remphos.com

